

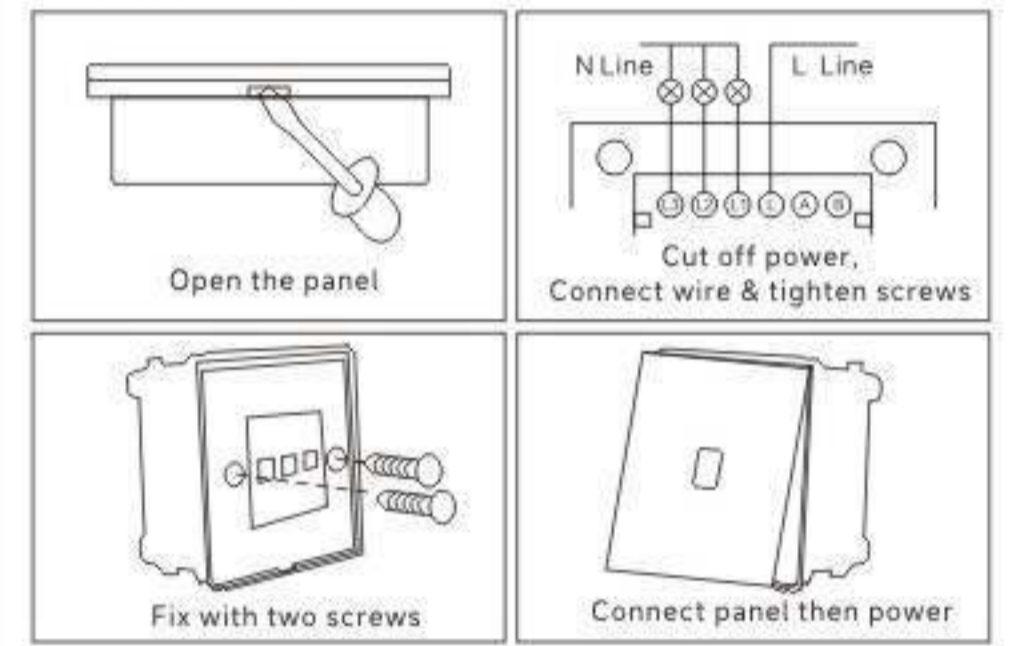


Please read the instructions carefully before installation.
The manufacturers will not be responsible for any failure operations not follow the instructions.

Special attentions:

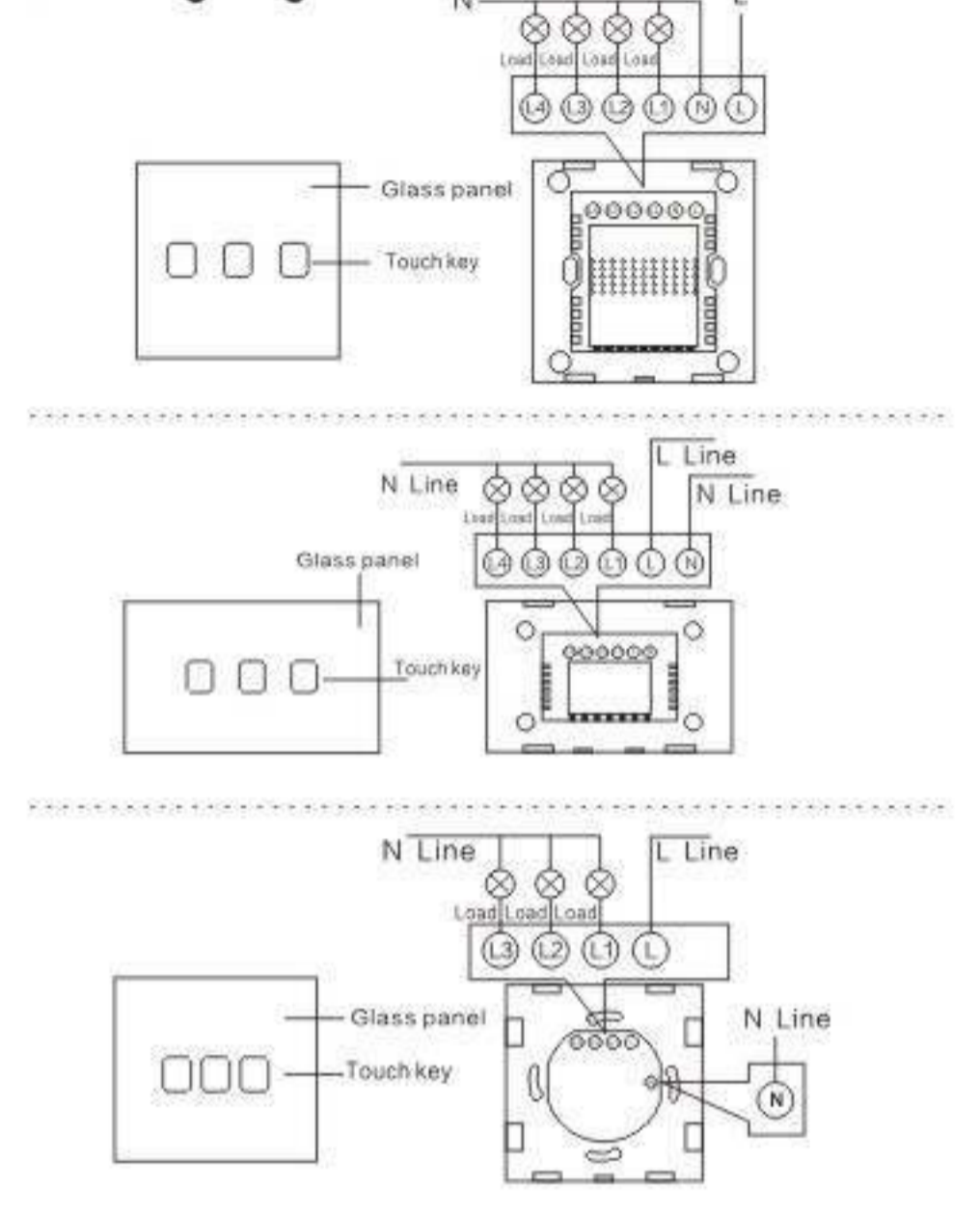
- 1-Don't install with power.
- 2-Strictly in accordance with the product wiring diagram.
- 3-Don't work over load.

1. Installation Steps:

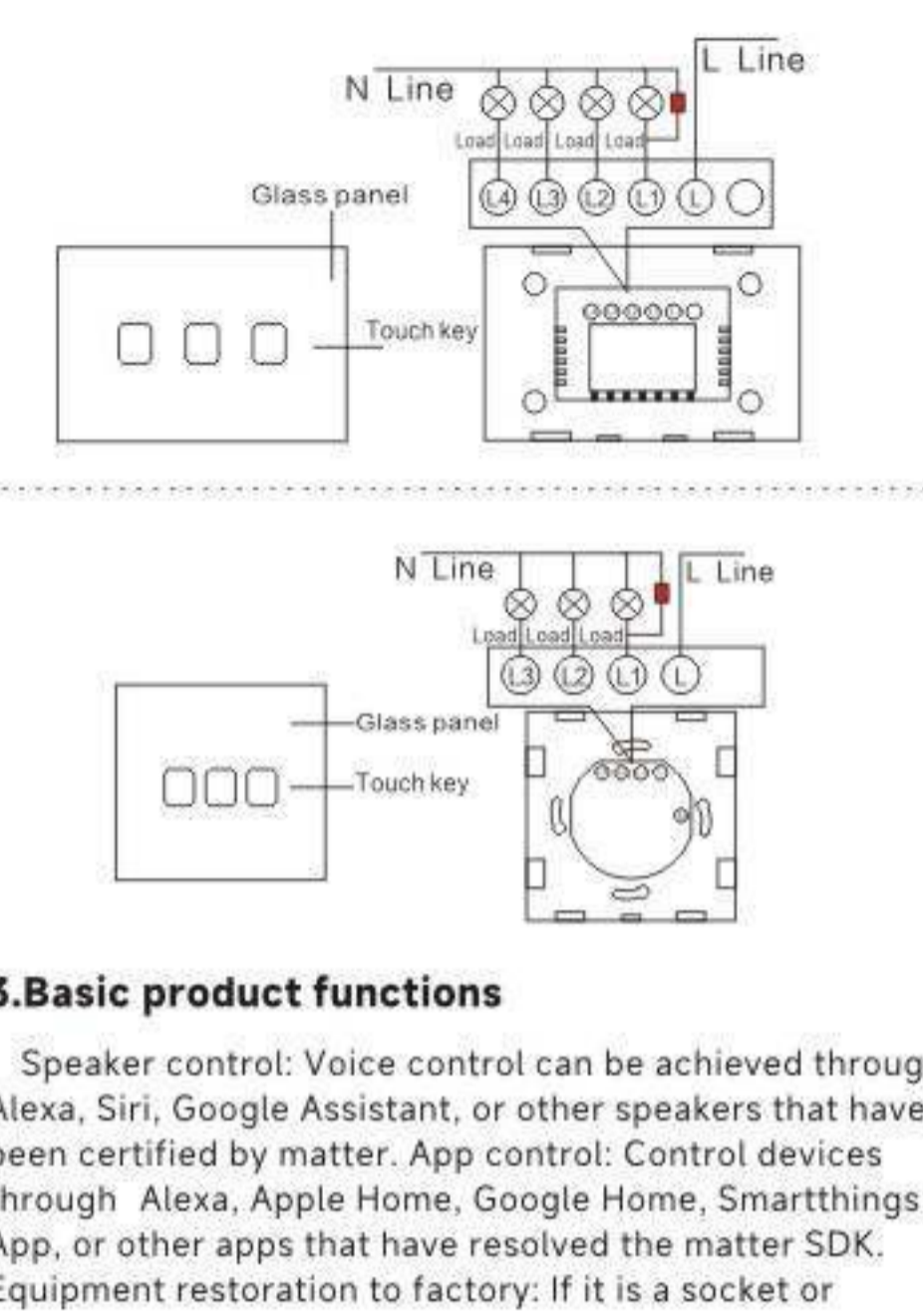


-1-

2. Wiring Diagram:



-2-



-3-

switch, press and hold for 5-10 seconds to reset, and the indicator light will flash 3 times during reset; If it is a light type, turn on and off 5 times, and the light will flash 3 times during reset;
Device networking: Each device has a matter QR code and an 11 digit short code. If you need to bind the device, you can scan the QR code or enter the 11 digit short code through the pairing app for pairing and binding.

4.Apple Home App Network Distribution

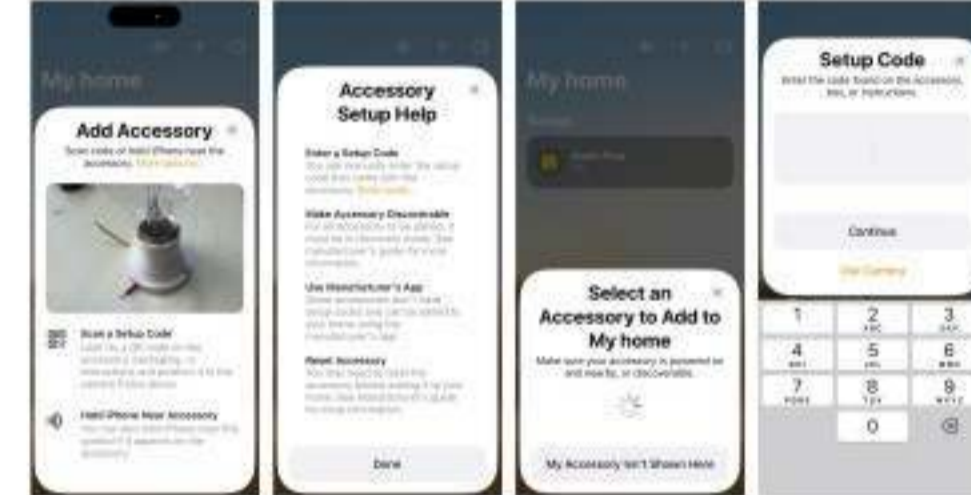
- 1- Checking the environment
 - 1)The system version of Apple phones is greater than or includes version 16.2.
 - 2)Equipped with a control center for matter, any of the following devices can be used: Home Pod, Home Pod mini, Apple TV.
 - 3)Join a 2.4G WiFi network, and the WiFi password cannot be empty or hidden.
- 2- Distribution Network
 - 1)Step 1 Long press the device button for 3 seconds, and the distribution network indicator light will flash red to enter the distribution network state;
 - 2)Step 2 Open the Home App, click on the "+" sign on the homepage, select "Add or Scan Accessories", use the QR code to scan the device, and then follow the prompts to add it;

-4-

QR code pairing interface:

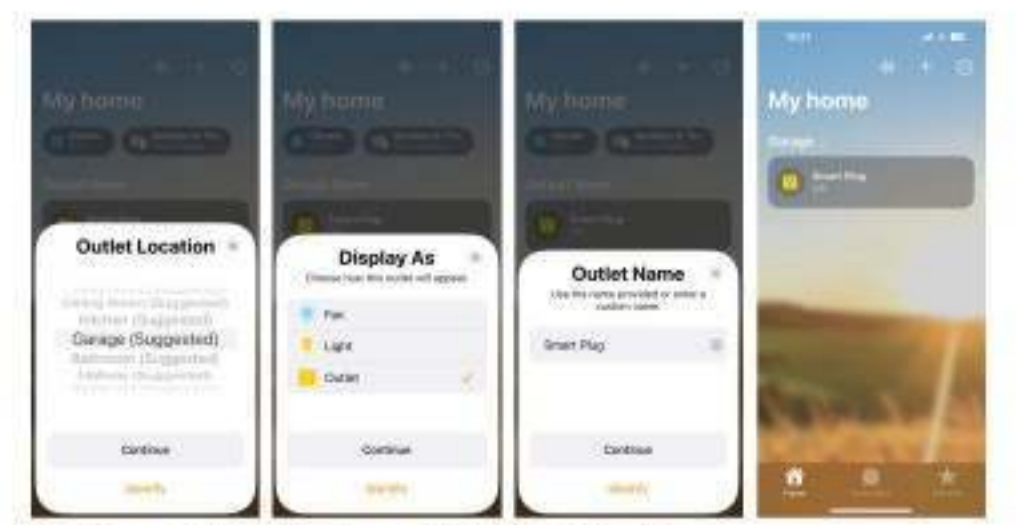


Pairing code network interface



After the device is successfully added, the location and name of the device can be changed, as shown in the following figure;

-5-



5.Alexa App Network Distribution

- 1- Checking the environment
 - 1)Alexa App version: greater than or equal to 2.2.491118.0.
 - 2)Equipped with a control center for matter, any of the following devices can be used:

Device	Version
Echo/Echo Dot	5th Gen: Echo Dot, Echo Dot (Gen 5 with Clock) 4th Gen: Echo, Echo Dot, Echo Dot (Gen 4 with Clock) Third Gen: Echo, Echo Dot, Echo Dot (Gen 3 with Clock)
Echo Show	3rd Gen: Echo Show 10, Echo Show 15 2nd Gen: Echo Show 8, Echo Show 5 1st Gen: Echo Show, Echo Show 8

-6-

- 2-Distribution Network
 - 1) Step1 Long press the device button for 5 seconds, and the distribution network indicator light will flash red to enter the distribution network state;
 - 2) Step2 Open the Alexa App, click on the "+" sign on the homepage, select "Add Device", then select "other" and select "Connect your Matter Device" and follow the prompts to complete the addition;



-7-

- 3- If the device is successfully added, return the device list.

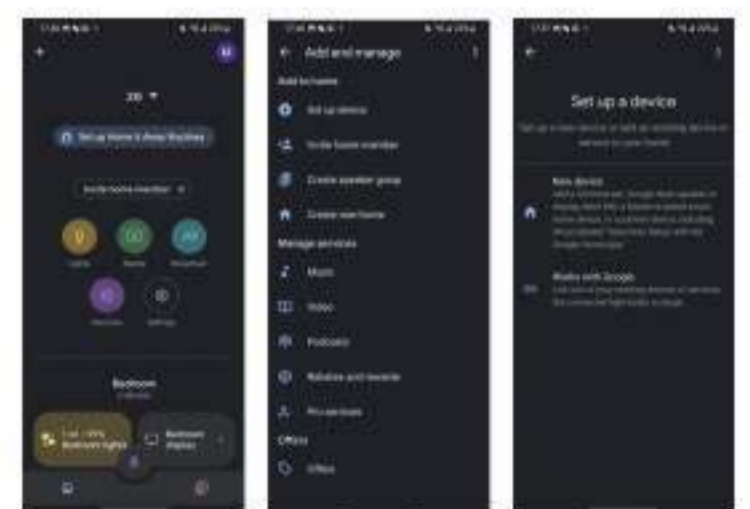


-8-

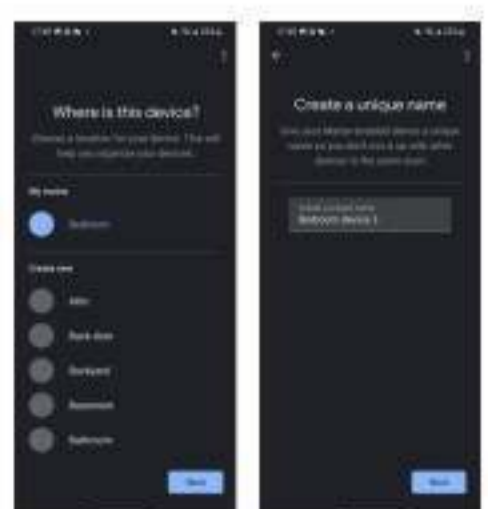
6. Google Home App Network Distribution

- 1- Environmental inspection
 - 1) Install the Google Home app.
 - 2) Equipped with a control center for matter, any of the following devices can be used: Google Nest Audio, Google Nest Hub, Google Nest Hub (2nd gen), Google Nest Hub Max, Google Nest Mini, Nest WiFi Pro.
- 2- App distribution network
 - The first step is to press and hold the device button for 5 seconds, and the distribution network indicator light will flash to enter the distribution network state;
 - Step 2, open the homepage of the Google Home App, click "+", go to it, click "Set up device", and select "New" Add devices as prompted;

-9-



After successfully adding the device, you can set the location of the room to which the device belongs and modify the device name;



-9-

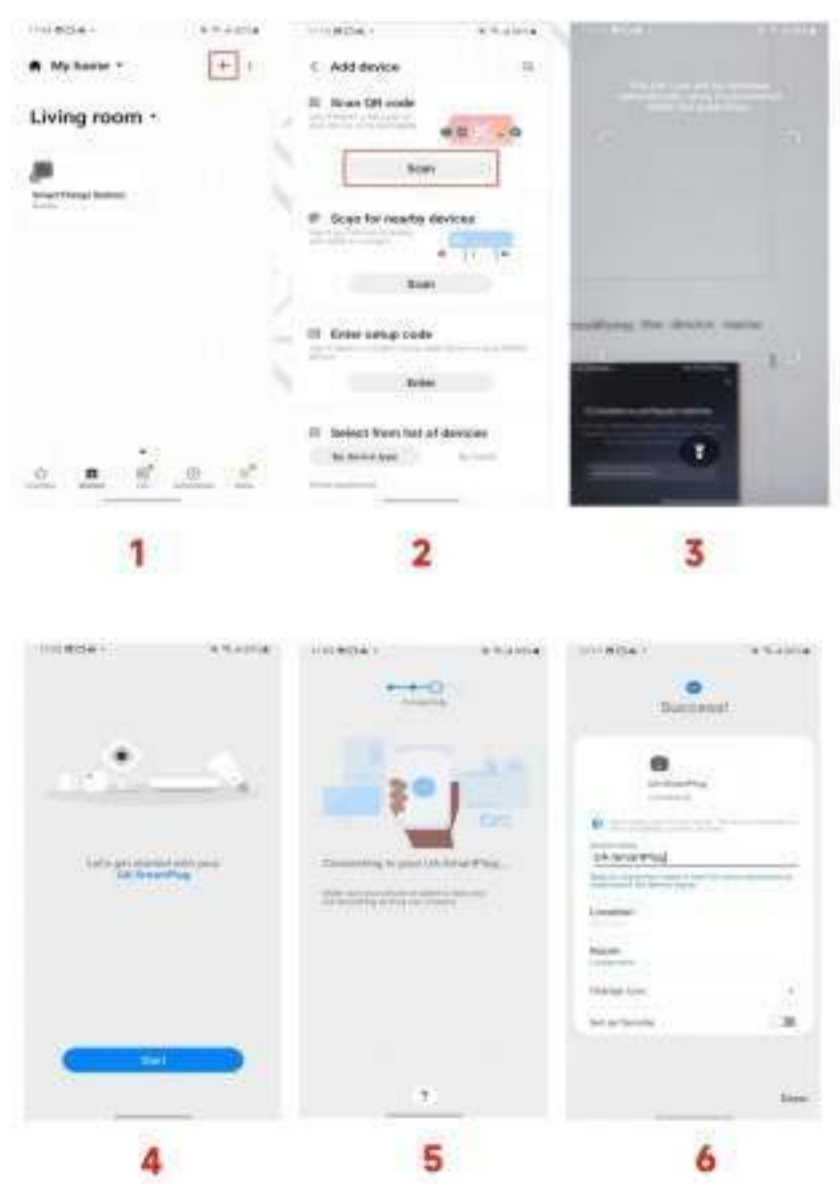
Attention: The distribution network of the Google ecosystem needs to have a network that can access Google domain names, and special attention should be paid when demonstrating in China.

7. Samsung Smartthings Distribution Network

- 1- Environmental inspection
 - 1) Install Smartthings app, version greater than 1.8.01.22
 - 2) Having a control center, which can be: Smartthings Station, Smartthings hub
- 2- App Distribution Network
 - The first step is to put the device into distribution network mode.
 - The second step is to log in to the Samsung Smartthings App (which has already been linked to the control center), click on the "+" in the upper right corner of the homepage, and then click on "Scan QR code" or "Enter setup code" to navigate to it;

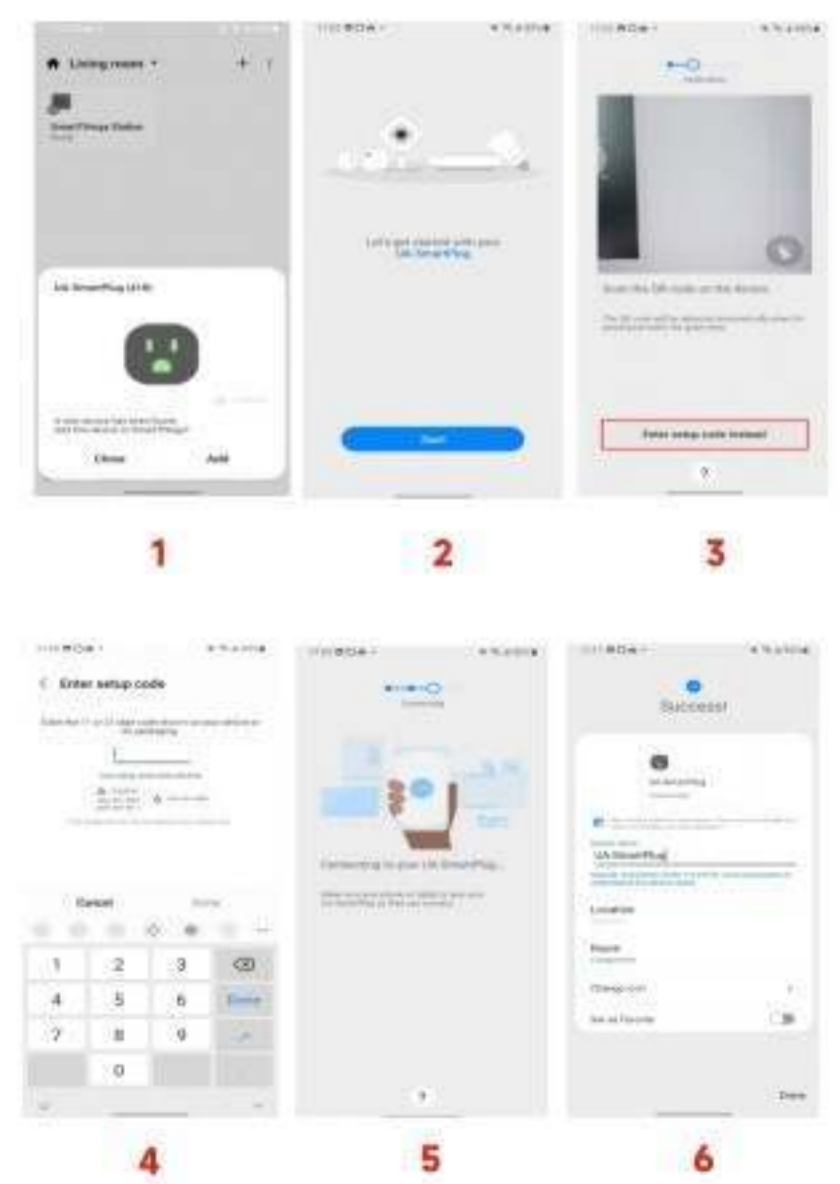
-10-

The following is the Scan QR code mode:



-11-

The following is the "Enter setup code" mode:



-12-

8.Equipment control

8.1 App Control

After the device is successfully connected to the network, various apps or speakers can be used to control functions such as switches, as shown in the following figure:



8.2 Voice control

- 1-Alexa voice control
 - Turn on/off the switch: Alexa, turn on/off the switch
- 2-HomePodmini voice control
 - Turn on/off device: HeySiri, turn on/off switch
- 3-Google voice control
 - Turn on/off device: HeyGoogle, turn on/off switch
- 4-Smartthings installation does not support voice control, only APP control

-13-

8.3 Device Sharing

The Matter switch can be used for cross ecosystem sharing through apps from various ecosystems. Any app can click to enter the device settings page and click on the device sharing pop-up
Enter the device sharing pairing code, then use other platform apps to enter the device sharing pairing code or scan the sharing pairing code, and follow the prompts to complete the addition.

9. Specification

- 1- Rated Voltage:AC110V/AC220V
- 2- Rated Frequency: 50HZ/60HZ
- 3- Self Power Consuming: $\leq 0.3mA$
- 4- Rated Power:
 - Neutral & Live Line series: 1-2000w
 - Single Live Line low power series: 5-600W/gang
 - Single Live Line high power series: 5-2000W
- 5-UK series Dimension: 86mm*86mm*33mm.
US series Dimension: 118mm*72mm*34mm.
EU series Dimension: 86mm*86mm*35mm.
80mm*80mm*35mm.

-14-



User Manual

Smart Switch